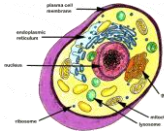


Name _____



Period _____



Prokaryotic & Eukaryotic Cells' Organelles & their Functions

GLOGSTER RUBRIC

Category	10	8	6	4	2
Accurate information	Additional accurate facts/images included in the glog.	The glog contains accurate information and	Few errors in the facts/images included in the glog.	Many errors in the facts/images included in the glog.	Copied (plagiarized) text included in the glog.
Labels	All items of importance are clearly labeled with labels that can be read from at least 3 feet away.	Almost all items of importance are clearly labeled and labels can be read from at least 3 feet away.	Some items of importance are clearly labeled and labels can be read from at least 3 feet away.	Few items of importance are labeled and labels are difficult to read.	Labels are too small to view or no important items were labeled.
Graphics – Relevance	All graphics are related to the topic and make the Glog easier to read and understand.	Almost all graphics are related to the topic and most make it easier to read and understand.	Some graphics are related to the topic and make it easier to understand.	Few graphics relate to the topic.	No graphics relate to the topic.
Attractiveness	The Glog is exceptionally attractive in terms of design, layout, and neatness.	The Glog is attractive in terms of design, layout, and neatness.	The Glog is fairly attractive, but a bit messy.	The Glog is poorly designed and very messy.	The Glog is distractingly messy and unattractive.
Grammar	There are no grammatical–mechanical mistakes on the Glog.	There is 1 grammatical–mechanical mistake on the Glog.	There are 2-3 grammatical–mechanical mistakes.	There are 4 grammatical–mechanical mistakes.	There are more than 4 grammatical–mechanical mistakes.

Total points _____/50 = _____% + 5 points (student printed their rubric) = _____%

Comments: